



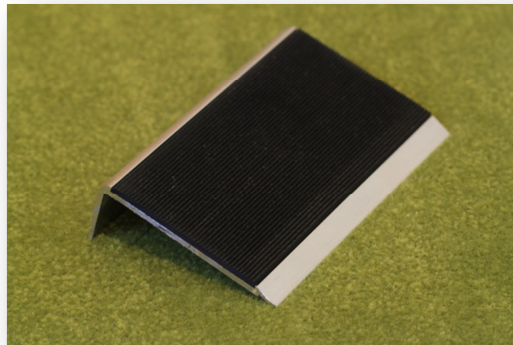
VINYL STAIR NOSING INSTALLATION INSTRUCTIONS

1. Thoroughly clean the substrate surface with an industrial cleaner (Acetone or similar) Remove any loose paint or sealant, and allow surface to dry.
2. Locate the stair nosing in position, ensuring it is centrally positioned on the top step and bottom step and firmly against the riser of the step - Run a string line from the left edge of the bottom nosing, this will give you a straight, true line.
3. Use the pre-drilled holes as a template, to mark the location of the holes in the substrate.
4. Drill the fixing holes in the substrate to the appropriate depth in the marked location to suit the fixings – wipe away any dust or debris.
5. Insert the red plastic plugs in the drilled holes, ensuring the plug finishes level with the floor surface.
6. It is recommended that stair nosings are installed using stainless steel screws and Bostik Seal “N” Flex FC – keep the adhesive clear of the outside edge and drill holes.
7. Carefully locate the stair nosing back onto the step, lining up the drill holes, tighten the screws firmly – this will create a strong, even bond.
8. Measure and cut vinyl insert .
9. Peel off double sided tape film cover and press the vinyl tread insert firmly in place to ensure even contact between the adhesive and the surface of the insert strip, using a roller or your hand/foot .

Carpet – Carpet needs to be firm and substrate sound to ensure a secure fixing. The instructions above should be followed – it is advisable to use a carpet punch to punch a hole through the carpet, where the hole is to be drilled. Where the carpet is required to be cut away – release the nosing away from the step riser by 10mm. Using a sharp box cutter knife, cut the carpet parallel to the nosing around all three sides. Remove the nosing and cut along the leading edge of the step. Remove the carpet and place the nosing firmly against the riser of the step. Where the carpet is cut away – adhesive can be used on the underside of the nosing.

Tools Required

- Acetone
- Stanley Knife & Blade
- String Line
- Screwdriver
- Glue Gun
- Roller
- Soft Cloth
- Drill
- Brush and pan
- Fixings and Glue – supplied



Installation instructions are provided as a guide only, individual site specific conditions need to be considered prior to undertaking installation.